



© 2025 Piotr Kowalewski

Reversi Prime is a classic strategy board game brought to the screen of the HP Prime calculator, designed with a focus on graphics and animations.

Game features:

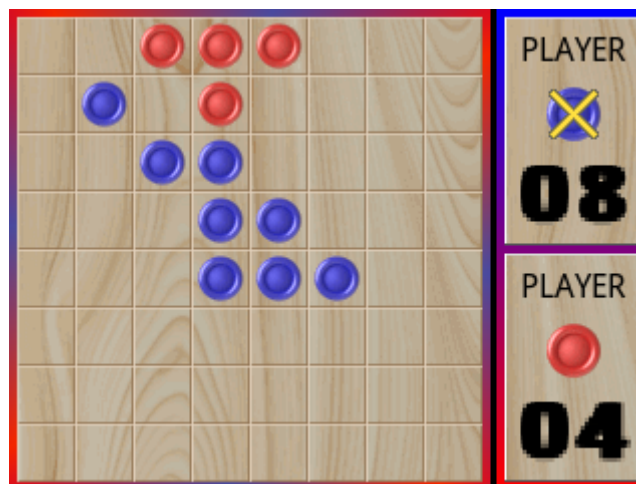
- Possibility to play against two players or between a player and AI.



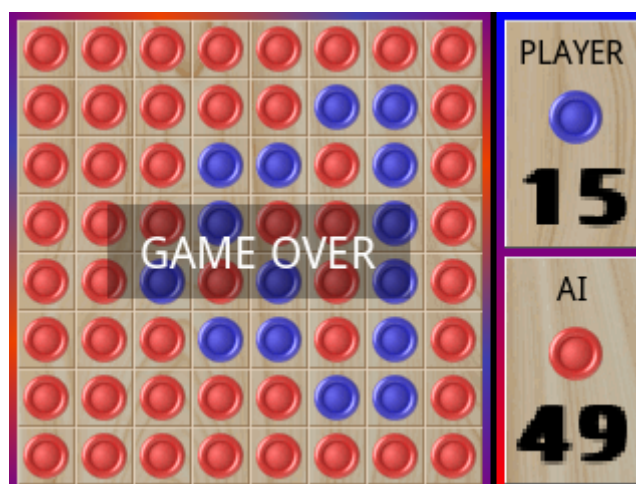
- When playing against AI, it is possible to choose the color of the discs the player will use and select which player starts the game.



- If a player has no valid moves, their turn is skipped, showing a cross on the player indicator to indicate the loss of turn.



- The game ends when all board spaces are filled or when neither player has a valid move. The player with more discs wins.



Version history:

- **1.00 (2025-03-07):**
 - Initial release
- **1.10 (2025-03-14):**
 - The program was converted into an app, launched via an icon from the Application Library.
 - The code has been reorganized and adjusted to ensure compatibility with firmware version 14591 (and possibly older versions). This should allow the game to run on systems emulating the HP Prime on Android, and likely on iOS and macOS as well.
 - Minor performance optimizations.
- **1.11 (2025-05-05):**
 - Fixed: Issue where counters were displayed incorrectly for certain CAS number format settings.
 - Fixed: Issue with repeated selection flash of the Exit button when pressing Esc multiple times.